



DEKO OCEAN GD A60 SLIDING DOORS

The GD A60 aluminium glazed sliding doors are the world's probably lightest fire classified glazed door systems for cruise ships, ferries, and luxury yachts.

The doors are fire tested and classified according to the latest FTP 2010 standards set by the International Maritime Organization (IMO).

A COMPLETE DOOR SYSTEM

Developed as a complete system, the doors are designed to compliment the design of the vessel's steel bulkhead and partitions.

DEKO Ocean GD A60 are available as single doors and can be built into GP A60 partitions and other types of partitions.

DEKO Ocean GD A60 sliding doors have been fire tested at internationally

recognized and accredited fire institutes and certified by Bureau Veritas.

NARROWER AND LIGHTER

The doors are an integrated part of the DEKO Ocean partition concept that is up to 25% narrower and 25% lighter than most of the other competing systems on the market today.

COLOURS AND SURFACE FINISHES

GD A60 sliding door frames are supplied in natural anodised aluminium as standard.

Powder coated colours are also available.

In addition, the profiles can be supplied with special surface finishes such as copper look, stainless steel look etc.

APPLICATION

DEKO Ocean GD A60 sliding doors can be furnished with various high quality marine-type hardware and accessories. The doors can be supplied as self-closing and automatic. Custom-made designs are available on request.



TYPE SUMMARY

Type	Fire resistance	Door leaf thickness	Door weight	Glass weight (m2)
Single door	A60	74mm	52kg ¹	59kg ²

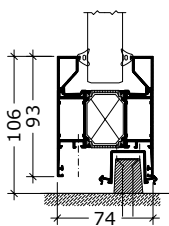
Type	Max. door frame size	Max. door leaf size	Sound insulation (Rw)
Single door	1431*2410mm	1337*2423mm	35-38dB2

1) Standard door size (frame+leaf): 900*2000*74

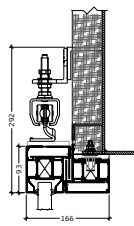
2) The airborne sound insulation of DEKO Ocean GD A60 depends, among other things, on the glasstype installed and door sill.

Please be aware that drop sealant can be delivered in various solutions and door stops are available on request.

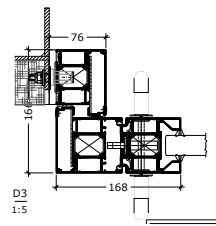
DETAILS



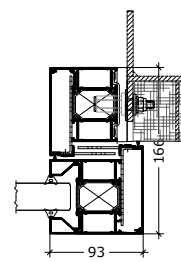
Floor



Ceiling



Door lock



Wall